

Exam4Tests



What Clients Say About Us

Disclaimer Policy: The site does not guarantee the content of the comments. Because of the different time and the changes in the scope of the exam, it can produce different effect. Before you purchase the dump, please carefully read the product introduction from the page. In addition, please be advised the site will not be responsible for the content of the comments and contradictions between users.

“ My friend introduces me this exam4tests. He passed M2110-670. And then are ready for C2090-555. Now I pass M2110-670 too. It is really help. It makes me half the work, double the results. They do not lie to me. Very thanks. It is worthy. ”

“ Can not believe most test questions are coming from this practice file. It is very useful and helps me get a high score. Can not believe! It saves me a lot of time and mondy. Good value for money! ”



Matthew



Winfred

Our Clients



<http://www.exam4tests.com>

Latest exam questions & answers help you to pass IT exam test easily

Exam : **070-331**

Title : Core Solutions of Microsoft
SharePoint Server 2013

Vendor : Microsoft

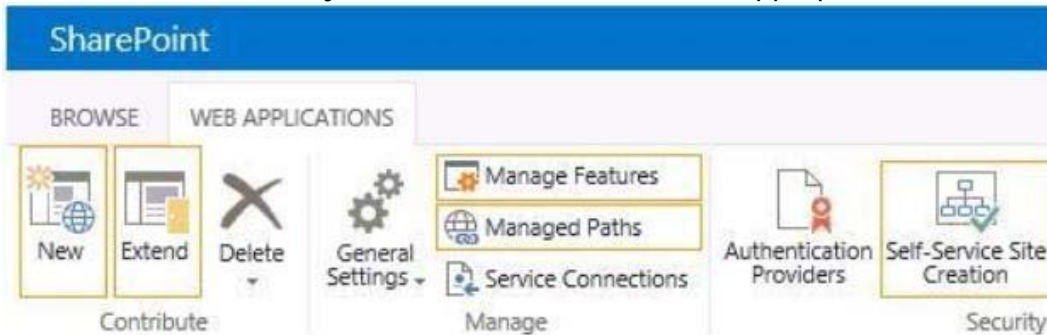
Version : DEMO

NO.1 HOTSPOT

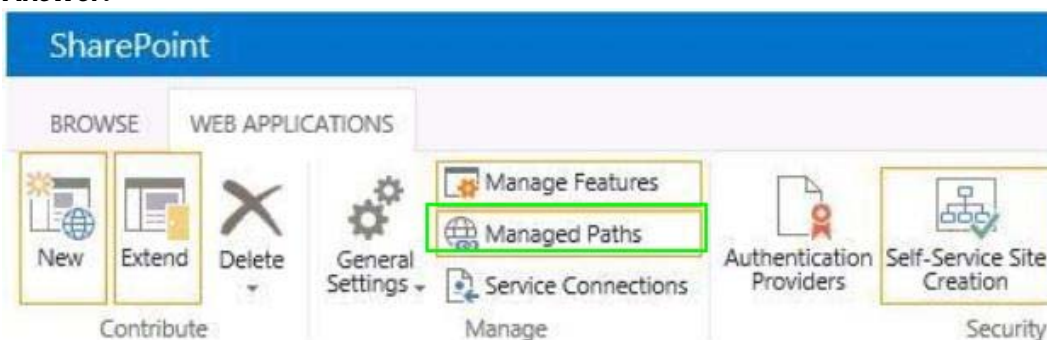
You are setting up individual user sites.

You need to ensure that site addresses follow corporate guidelines.

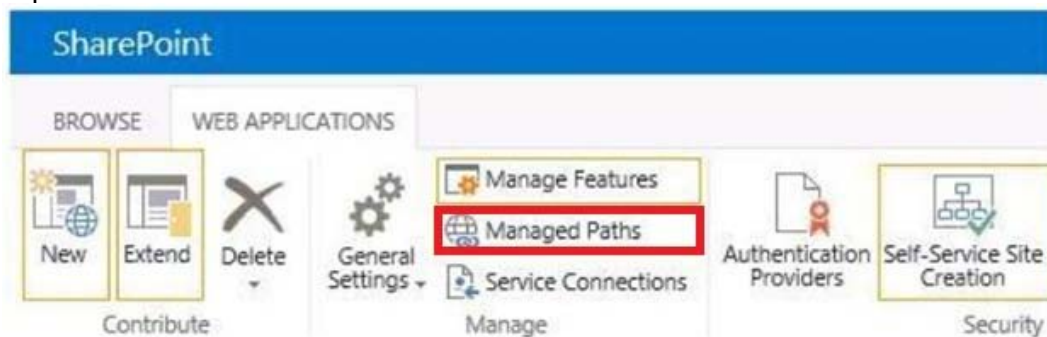
Which command should you use? (To answer, select the appropriate command in the answer area.)



Answer:



Explanation:



Note: When you define managed paths, you can specify the paths in the URL namespace of a web application to use for site collections. You can specify that one or more site collections exist at a specified path. This can be a convenient method of combining multiple site access for users in various departments.

NO.2 You need to configure a managed path to support Project2.

What should you do?

- A. Use an explicit inclusion for /corp.
- B. Create a new IIS virtual directory under the /corp site.
- C. Create a new IIS virtual directory under the default website.
- D. Use a wildcard inclusion for /corp.

Answer: D

NO.3 DRAG DROP

You need to configure the environment to allow replication from the existing domain to Office 365.

Which components should you use? (To answer, drag the appropriate products or technologies to the correct location or locations in the answer area. Each product or technology may be used once, more than once, or not at all. You may need to drag the split bar between panes or scroll to view content.)

Answer Area	
Purpose	Product or technology
Local area network	
Perimeter network	
User replication	

AD FS 2.0
AD FS 2.0 Proxy
Microsoft Office 365 Deployment Readiness Tool
Microsoft Online Services Directory Synchronization tool
SAML token-based claims authentication
Windows Identity Foundation

Answer:

Answer Area	
Purpose	Product or technology
Local area network	AD FS 2.0
Perimeter network	AD FS 2.0 Proxy
User replication	Microsoft Online Services Directory Synchronization tool

AD FS 2.0
AD FS 2.0 Proxy
Microsoft Office 365 Deployment Readiness Tool
Microsoft Online Services Directory Synchronization tool
SAML token-based claims authentication
Windows Identity Foundation

Explanation:

Box 1: AD FS 2.0 Box 2: AD FS 2.0 Proxy Box 3: Microsoft Online Services Directory Synchronization Tool

Note:

*From Scenario:

/ Use Active Directory Federation Services (AD FS) 2.0 to authenticate Contoso employees, partners, and customers.

/ Automate the sign-in experience by using the local AD FS 2.0 servers for AD FS single sign-on (SSO).

*Implementing SSO for Office 365 is indicative of setting up ADFS 2.0

By default (the only supported DirSync scenario), passwords are not synced to Office 365 by Directory Sync. ADFS is required in order to use on-premises passwords for Office 365.

*Directory synchronization is the synchronization of directory objects (users, groups, and contacts) from your on-premises Active Directory environment to the Office 365 directory infrastructure. The Microsoft Online Services Directory Synchronization tool is used to

perform this synchronization.

NO.4 HOTSPOT

You deploy a SharePoint Server 2013 server farm and you create a team site.

You perform the following tasks in the team site:

Create a content type named Financial.

Create a content type named Informational.

Enable all auditing policies for both of the content types.

Create a document library named Data and add the new content types to the library.

Enable the bar code policy feature on the Financial content type in the new library only.

For each of the following statements, select Yes if the statement is true. Otherwise select No.

	Yes	No
When users upload documents to the Data document library, they can specify a content type of Financial or Informational.	<input type="radio"/>	<input type="radio"/>
When users upload documents to the Data document library, they can specify a content type of Financial or Informational.	<input type="radio"/>	<input type="radio"/>
A log will be kept of all the users who attempt to access documents that use the Financial content type in the Data document library.	<input type="radio"/>	<input type="radio"/>

Answer:

	Yes	No
When users upload documents to the Data document library, they can specify a content type of Financial or Informational.	<input checked="" type="radio"/>	<input type="radio"/>
When users upload documents to the Data document library, they can specify a content type of Financial or Informational.	<input checked="" type="radio"/>	<input type="radio"/>
A log will be kept of all the users who attempt to access documents that use the Financial content type in the Data document library.	<input checked="" type="radio"/>	<input type="radio"/>

NO.5 You need to import employee photos into SharePoint user profiles by using the least amount of administrative effort.

Which three actions should you perform? (Each correct answer presents part of the solution. Choose three.)

- A. Define a mapping for the thumbnailPhoto attribute of the Picture user profile property.
- B. Run the Update-SPUserSolution Windows PowerShell cmdlet.
- C. Run an incremental synchronization of the User Profile Synchronization service.

- D. Run a full synchronization of the User Profile Synchronization service.
- E. Run the Update-SPProfilePhotoStore Windows PowerShell cmdlet.
- F. Define a mapping for the photo attribute of the Picture user profile property.

Answer: A,D,E

Explanation:

A: Step 3 below.

D: Step 5 below.

E: Step 6 below.

Note: Importing Images into SharePoint User Profiles My Sites

To make the user images that we have uploaded into the thumbnail Photo attribute in Active Directory available in SharePoint we will first need to map it to the Picture property in the User Profile Service Application.

Firstly you will need to go into the User Profile Service Application.

1. Central Admin > Application Management > Service Applications > Manage Service Applications > User Profile Service Application 2. Then you will need to go into the Manage User Properties section and edit the Picture property.

3. Next we will map the Active Directory property thumbnail Photo to the Picture property in SharePoint

4. Once the mapping has been applied the Manage User Properties page will look like this. 5. Now we will need to run a Full User Profile Synchronization job so that SharePoint can import the user images from Active Directory Synchronization > Start Profile Synchronization > Start Full Synchronization

6. Lastly we will need to force SharePoint to update the User Profile Database - This will create the thumbnails that are used in My Sites and the User Profile Service.

This will need to be run in the SharePoint PowerShell Console with the appropriate My Site permissions.

```
1 # This will create thumbnails from the user profile images saved in the My Sites User
  Profile pictures library
2 Update-SPProfilePhotoStore -MysiteHostLocation http://mysites -
  CreateThumbnailsForImportedPhotos 1
```

Reference: IMPORTING USER PROFILE PICTURES INTO ACTIVE DIRECTORY, EXCHANGE 2010 & SHAREPOINT 2010 - COMPLETE GUIDE

NO.6 You plan to set up an external list to work with the existing line-of-business application in the cloud.

You need to upload a configuration file to SharePoint Online to enable communication with the external data.

Which configuration file should you upload?

- A. A Microsoft Business Connectivity Services (BCS) resource file
- B. A Microsoft Business Data Connectivity (BDC) service model file that specifies a LobSystemInstance
- C. A SharePoint trust configuration file that specifies permissions
- D. A comma-separated OData definition file that specifies instance permissions

Answer: B

NO.7 Your network contains an Active Directory forest. The forest contains a single domain named adatum.com.

The network contains a SharePoint Server 2013 server farm. The farm contains a single web application named Web1. Users connect to Web1 by using the URL http://web1.adatum.com. You need to configure the People Picker control to display only users who are members of

organizational units (OUs) named Managers and Contractors.

What should you do?

- A. Modify the User Information List of the site collection.
- B. Set the Peoplepicker-setsiteuseraccountdirectorypath property of the site collection.
- C. Set the Peoplepicker-searchadforests property of the site collection.
- D. Modify the User Policy of Web1.

Answer: B

Explanation:

* Operation name: Setsiteuseraccountdirectorypath Sets the site user account directory path to a specific organizational unit (OU) in the same domain when the url and pathparameters are specified.

* Example To set a list of users to a specific OU (for example, Sales) in the Contoso Corp domain, use the following syntax:

```
stsadm -o setsiteuseraccountdirectorypath -path "CN=Sales,DC=ContosoCorp,DC=local"
-url http://server_name
```

NO.8 DRAG DROP

You need to design a SharePoint storage architecture to resolve the existing storage issues.

Which storage architecture should you use? (To answer, drag the appropriate storage types to the correct location or locations in the answer area. Each storage type may be used once, more than once, or not at all. You may need to drag the split bar between panes or scroll to view content.)

	Answer Area						
<div style="border: 1px solid #ccc; padding: 2px; margin-bottom: 2px;">RAID 10 storage on Serial ATA (SATA) disk drives</div> <div style="border: 1px solid #ccc; padding: 2px; margin-bottom: 2px;">RAID 10 storage on Fibre Channel (FC) disk drives</div> <div style="border: 1px solid #ccc; padding: 2px; margin-bottom: 2px;">Remote BLOB Storage on Serial ATA (SATA) disk drives</div> <div style="border: 1px solid #ccc; padding: 2px;">Remote BLOB Storage on Fibre Channel (FC) disk drives</div>	<table border="1" style="width: 100%; border-collapse: collapse;"> <thead> <tr> <th style="width: 30%;">Content</th> <th style="width: 70%;">Storage type</th> </tr> </thead> <tbody> <tr> <td>SharePoint content database</td> <td></td> </tr> <tr> <td>Photo files</td> <td></td> </tr> </tbody> </table>	Content	Storage type	SharePoint content database		Photo files	
Content	Storage type						
SharePoint content database							
Photo files							

Answer:

	Answer Area						
<div style="border: 1px solid #ccc; padding: 2px; margin-bottom: 2px;">RAID 10 storage on Serial ATA (SATA) disk drives</div> <div style="border: 1px solid #ccc; padding: 2px; margin-bottom: 2px;">RAID 10 storage on Fibre Channel (FC) disk drives</div> <div style="border: 1px solid #ccc; padding: 2px; margin-bottom: 2px;">Remote BLOB Storage on Serial ATA (SATA) disk drives</div> <div style="border: 1px solid #ccc; padding: 2px;">Remote BLOB Storage on Fibre Channel (FC) disk drives</div>	<table border="1" style="width: 100%; border-collapse: collapse;"> <thead> <tr> <th style="width: 30%;">Content</th> <th style="width: 70%;">Storage type</th> </tr> </thead> <tbody> <tr> <td>SharePoint content database</td> <td>RAID 10 storage on Fibre Channel (FC) disk drives</td> </tr> <tr> <td>Photo files</td> <td>Remote BLOB Storage on Serial ATA (SATA) disk drives</td> </tr> </tbody> </table>	Content	Storage type	SharePoint content database	RAID 10 storage on Fibre Channel (FC) disk drives	Photo files	Remote BLOB Storage on Serial ATA (SATA) disk drives
Content	Storage type						
SharePoint content database	RAID 10 storage on Fibre Channel (FC) disk drives						
Photo files	Remote BLOB Storage on Serial ATA (SATA) disk drives						

Explanation:

Content	Storage type
SharePoint content database	RAID 10 storage on Fibre Channel (FC) disk drives
Photo files	Remote BLOB Storage on Serial ATA (SATA) disk drives

*Fastest possible disk required for content database.

*From scenario: The content database uses RAID 5 storage.

Photo files that are more than one year old are rarely viewed. Employees actively use the default self-service site creation feature.

*BLOB used for photo files.

*Storage costs to house the photo files are too expensive.

Cheaper storage required for BLOB storage.

NO.9 DRAG DROP

A company deploys SharePoint Server 2013. You create a site report that uses a Content Search Web Part.

The default results that display in the Web Part are from an incorrect result source. The default result source must be set at the site level only.

You need to ensure that the Web Part uses the correct default result source by using the principle of least privilege.

Which four actions should you perform in sequence? To answer, move the appropriate actions from the list of actions to the answer area and arrange them in the correct order.

Actions

- Sign in as a member of the Members group for the site.
- Navigate to the **Site collection features** screen.
- Navigate to the **Search service application** screen.
- Sign in as a member of the Owners group for the site.
- Navigate to the **Site Settings** screen.
- Select a **Result Source** and set it as the default.
- Select **Result Sources**.

Answer Area



Answer:

Actions

- Sign in as a member of the Members group for the site.
- Navigate to the **Site collection features** screen.
- Navigate to the **Search service application** screen.
- Sign in as a member of the Owners group for the site.
- Navigate to the **Site Settings** screen.
- Select a **Result Source** and set it as the default.
- Select **Result Sources**.

Answer Area



Explanation:

Navigate to the Search Service application screen. Sign in as a member of the Owners group for the site.

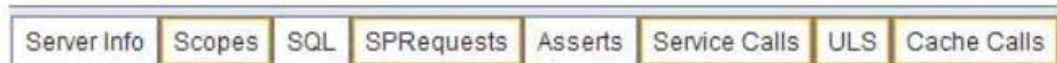
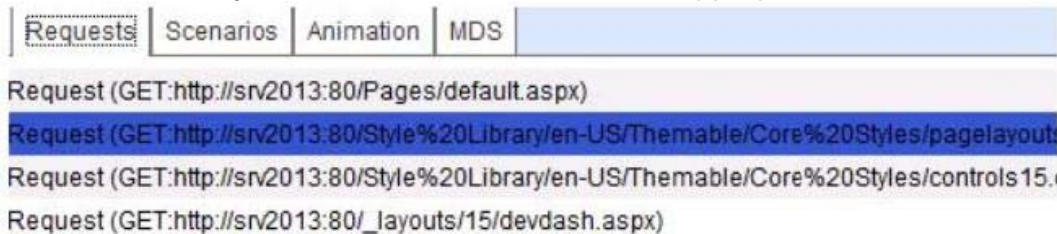
Navigate to the site setting screen. Select Result

NO.10 HOTSPOT

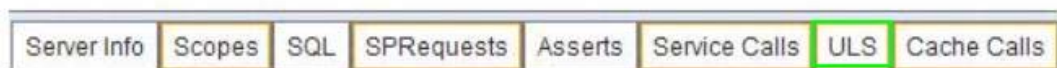
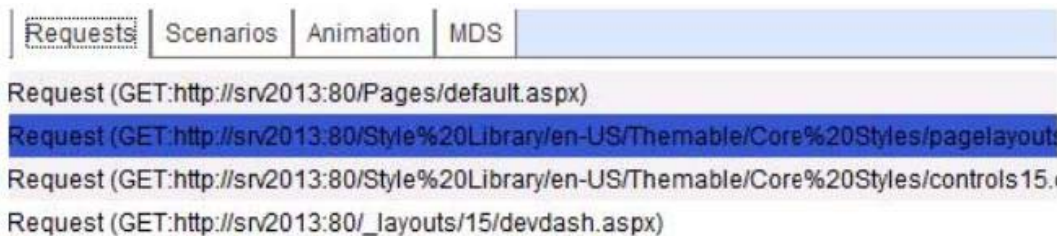
You are troubleshooting a SharePoint app by using the Developer Dashboard.

You need to view the events that have been logged for the selected request.

Which tab should you select? (To answer, select the appropriate tab in the answer area.)



Answer:



NO.11 You are managing a site collection in a SharePoint farm.

You need to configure the minimum level of permissions necessary for users to manage lists in the site collection

What permission level should you configure?

- A. Contribute
- B. View Only
- C. Edit

D. Read

Answer: C

NO.12 You have a SharePoint Server 2013 server farm.

You have a web applications named WebApp1.

You have a SharePoint hosted app named App1. App1 contains a client Web Part named WP1.

You add App1 to a site named Site1 in WebApp1.

You need to prevent App1 from reading information in Site1.

What should you do?

A. From Central Administration, modify the permission policy of WebApp1.

B. From Central Administration, modify the users permissions of WebApp1.

C. From Site Settings of the Central Administration site, delete App1 from the Site App Permissions list.

D. From Site Settings of Site1, delete App1 from the Site App Permissions list.

Answer: A

NO.13 DRAG DROP

A company has a multi-tenant SharePoint environment that includes a web application named WebApp1. WebApp1 is not secure.

The company plans to install SharePoint apps that allow all tenants access to custom applications.

You need to ensure that WebApp1 can host the SharePoint apps over a secure URL.

Which three actions should you perform in sequence? (To answer, move the appropriate actions from the list of actions to the answer area and arrange them in the correct order.)

The screenshot shows a drag-and-drop interface. On the left, there is a list of six actions in yellow boxes: "Install the SSL certificate on the SharePoint servers.", "Configure IIS to bind the WebApp1 website to the SSL certificate.", "Configure the SSL certificate in Central Administration.", "Use claims-based authentication to secure user accounts.", "Create an SSL certificate.", and "Configure IIS to use Kerberos authentication.". On the right, there is an empty "Answer Area" box.

Answer:

The screenshot shows an exam interface with two columns. The left column contains six options, each in a yellow box with a green border. The right column is titled 'Answer Area' and contains three yellow boxes with red borders, representing selected answers.

Options (Left Column):

- Install the SSL certificate on the SharePoint servers.
- Configure IIS to bind the WebApp1 website to the SSL certificate.
- Configure the SSL certificate in Central Administration.
- Use claims-based authentication to secure user accounts.
- Create an SSL certificate.
- Configure IIS to use Kerberos authentication.

Answer Area (Right Column):

- Create an SSL certificate.
- Install the SSL certificate on the SharePoint servers.
- Configure IIS to bind the WebApp1 website to the SSL certificate.

Explanation:

Box 1: Create an SSL certificate.

Box 2: Install the SSL certificate on the SharePoint servers.

Box 3: Configure IIS to bind the WebApp1 website to the SSL certificate.

Note: Example: Create Self Signed Certificate on IIS 8 Import Self Signed Certificate to SharePoint Certificate store Add Self Signed Certificate to trust management in Central Administration Configure IIS Binding

NO.14 HOTSPOT

You are managing a SharePoint farm. All users in the farm have access to a document library app. You need to begin the process of enabling managed terms for the app.

Which option should you select? (To answer, select the appropriate option in the answer area.)

Documents ▸ Settings

List Information

Name: Documents
Web Address: <http://sp2013/Shared Documents/Forms/AllItems.aspx>
Description:

General Settings

- List name, description and navigation
- Versioning settings
- Advanced settings
- Validation settings
- Column default value settings
- Rating settings
- Audience targeting settings
- Form settings

Permissions and Management

- Delete this document library
- Save document library as template
- Permissions for this document library
- Manage files which have no checked in version
- Workflow Settings
- Information management policy settings
- Enterprise Metadata and Keywords Settings
- Generate file plan report

Answer:

Documents ▸ Settings

List Information

Name: Documents
Web Address: <http://sp2013/Shared Documents/Forms/AllItems.aspx>
Description:

General Settings

- List name, description and navigation
- Versioning settings
- Advanced settings
- Validation settings
- Column default value settings
- Rating settings
- Audience targeting settings
- Form settings

Permissions and Management

- Delete this document library
- Save document library as template
- Permissions for this document library
- Manage files which have no checked in version
- Workflow Settings
- Information management policy settings
- Enterprise Metadata and Keywords Settings
- Generate file plan report

Explanation:

Documents ▸ Settings

List Information

Name: Documents
Web Address: http://sp2013/Shared Documents/Forms/AllItems.aspx
Description:

General Settings

- ▣ List name, description and navigation
- ▣ Versioning settings
- ▣ Advanced settings
- ▣ Validation settings
- ▣ Column default value settings
- ▣ Rating settings
- ▣ Audience targeting settings
- ▣ Form settings

Permissions and Management

- ▣ Delete this document library
- ▣ Save document library as template
- ▣ Permissions for this document library
- ▣ Manage files which have no checked in version
- ▣ Workflow Settings
- ▣ Information management policy settings
- ▣ Enterprise Metadata and Keywords Settings
- ▣ Generate file plan report

Note: Consistent use of metadata The managed metadata features in SharePoint products enable you to control how users add metadata to content. For example, by using term sets and managed terms, you can control which terms users can add to content, and you can control who can add new terms. You can also limit enterprise keywords to a specific list by configuring the Keywords term set as closed. When the same terms are used consistently across sites, it is easier to build robust processes or solutions that rely on metadata. Additionally, it is easier for site users to apply metadata consistently to their content.

NO.15 Your company has a SharePoint Server 2013 server farm.

You create a Business Connectivity Services (BCS) application.

You deploy the application to the farm,

Users create lists and add items to the lists based on the BCS application.

The users report that when they search for data, BCS items are not displayed in the search results.

Other items in the farm are displayed in the search results.

You need to ensure that BCS data is displayed in the search results. The solution must minimize administrative effort.

What should you create?

- A. a Local SharePoint Results result source
- B. an OpenSearch 1.0/1.1 result source
- C. a Line of Business Data content source
- D. a Custom Repository content source

Answer: C

Explanation:

If your company has an on-premises SharePoint 2013 farm and a SharePoint Online 2013 tenancy, you can use BCS to create a secure connection between the two to make line-of-business (LOB) data

available to applications for SharePoint and external lists in SharePoint Online. This is called a SharePoint BCS Hybrid solution. SharePoint Online 2013 supports only one-way connections from online to on-premises and to only one on-premises farm. The LOB data must be published as an OData source

NO.16 Which two actions should you perform? (Each correct answer presents part of the solution. Choose two.)

- A. Enable the Site Feeds feature on each My Site.
- B. Enable the Following Content feature on each team site.
- C. Enable self-service site creation on the web application that contains the team sites.
- D. Enable the Site Feeds feature on each team site.

Answer: B,D

Explanation:

Note:

When an administrator upgrades team sites from SharePoint Server 2010, they must activate site feeds on the upgraded team site by first enabling the Following Content feature on the team site, and then enabling the Site Feeds feature on the team site.

NO.17 DRAG DROP

A company has an Active Directory Domain Services (AD DS) domain and a SharePoint environment. The SharePoint environment includes a team site for each department.

All domain users have Read permissions on the root site. Currently only Human Resources department members have access to the Human Resources team site.

You have the following requirements for the Human Resources site:

- Employees who are not members of the Human Resources department can view only content that is not marked as sensitive.
- Human Resources department members can view all content.

You need to configure permissions for the Human Resources site.

Which three actions should you perform in sequence? (To answer, move the appropriate actions from the list of actions to the answer area and arrange them in the correct order.)

	Answer Area
Assign the Limited Access permission level on the sensitive content to all users who are not members of the Human Resources department.	
Configure the sensitive content in the Human Resources site to break inheritance from the parent site.	
Assign the Limited Access permission level on the Human Resources site to users who are not members of the Human Resources department.	
Configure the Human Resources site to inherit permissions from the root site.	
Remove the Read permission level on the sensitive content from users who are not members of the Human Resources department.	

Answer:

Answer Area	
Assign the Limited Access permission level on the sensitive content to all users who are not members of the Human Resources department.	Configure the Human Resources site to inherit permissions from the root site.
Configure the sensitive content in the Human Resources site to break inheritance from the parent site.	Configure the sensitive content in the Human Resources site to break inheritance from the parent site.
Assign the Limited Access permission level on the Human Resources site to users who are not members of the Human Resources department.	Remove the Read permission level on the sensitive content from users who are not members of the Human Resources department.
Configure the Human Resources site to inherit permissions from the root site.	
Remove the Read permission level on the sensitive content from users who are not members of the Human Resources department.	

Explanation:

Box 1:

Configure the Human Resources site to inherit permissions from the root site.

Box 2:

Configure the sensitive content in the Human Resources site to break inheritance from the parent site.

Box 3:

Remove the Read permission level on the sensitive content from users who are not members of the Human Resources department.

Note:

* Incorrect: "The Limited Access permission level is designed to be combined with fine-grained permissions to give users access to a specific list, document library, item, or document, without giving them access to the entire site. However, to access a list or library, for example, a user must have permission to open the parent Web site and read shared data such as the theme and navigation bars of the Web site. The Limited Access permission level cannot be customized or deleted" "Limited Access" allows no direct access to site content at all, but is intended to allow users to traverse the site in order to access the items within it that they have explicit permissions to see.

NO.18 You need to ensure that service applications meet the technical requirements by using the least amount of administrative effort.

What should you do?

- A. Use the Farm Configuration Wizard to add service applications.
- B. Use Windows PowerShell to configure service applications.
- C. Use the SharePoint Products Configuration Wizard to complete the server configuration.
- D. In Central Administration, manually create each service application.

Answer: B